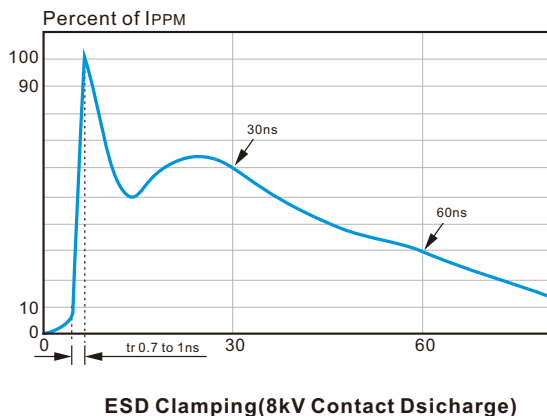
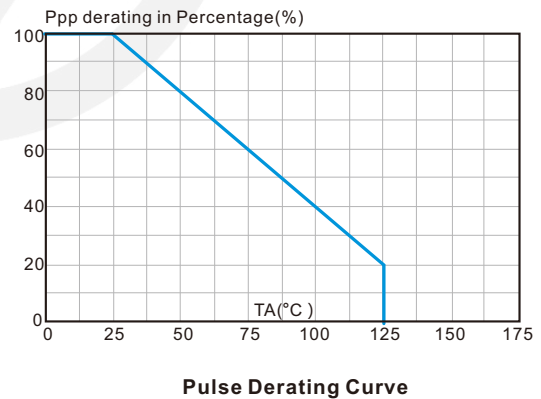
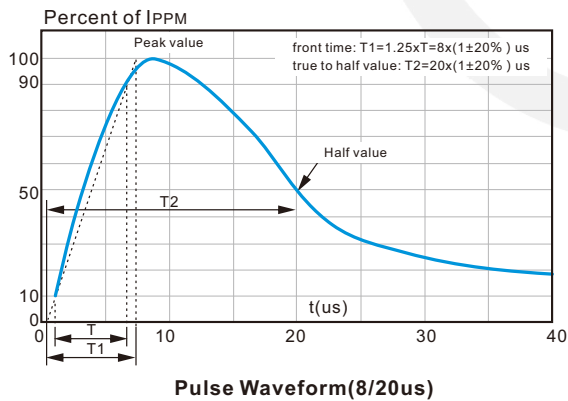


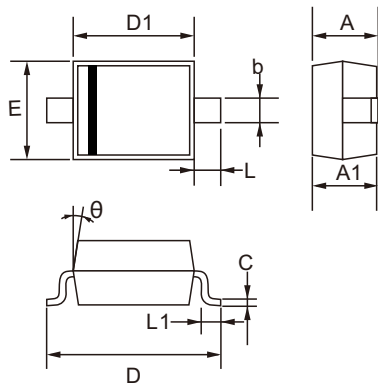
Electrical Characteristics (TA=25°C unless otherwise specified)

Symbol	Parameter	Test Condition	Min	Typ	Max	Units
V _{RWM}	Reverse Working Voltage				4.5	V
V _{BR}	Reverse Breakdown Voltage	I _T = 1mA	4.6	5.2	6.4	V
I _R	Reverse Leakage Current	V _{RWM} = 4.5V			1	uA
I _{PP}	Peak Pulse Current	t _p = 8/20μs			160	A
V _C	Clamping Voltage	I _{PP} = 50A, t _p = 8/20μs		8.5	11	V
		I _{PP} = 100A, t _p = 8/20μs		12	14	V
		I _{PP} = 160A, t _p = 8/20μs		17	20	V
C _J	Junction Capacitance	V _R = 0V, f = 1MHz		300	500	pF

Characteristic Curves


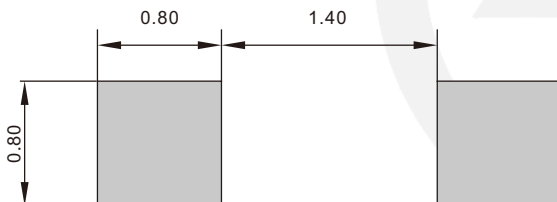
SOD-323 Package Outline

Unit: mm

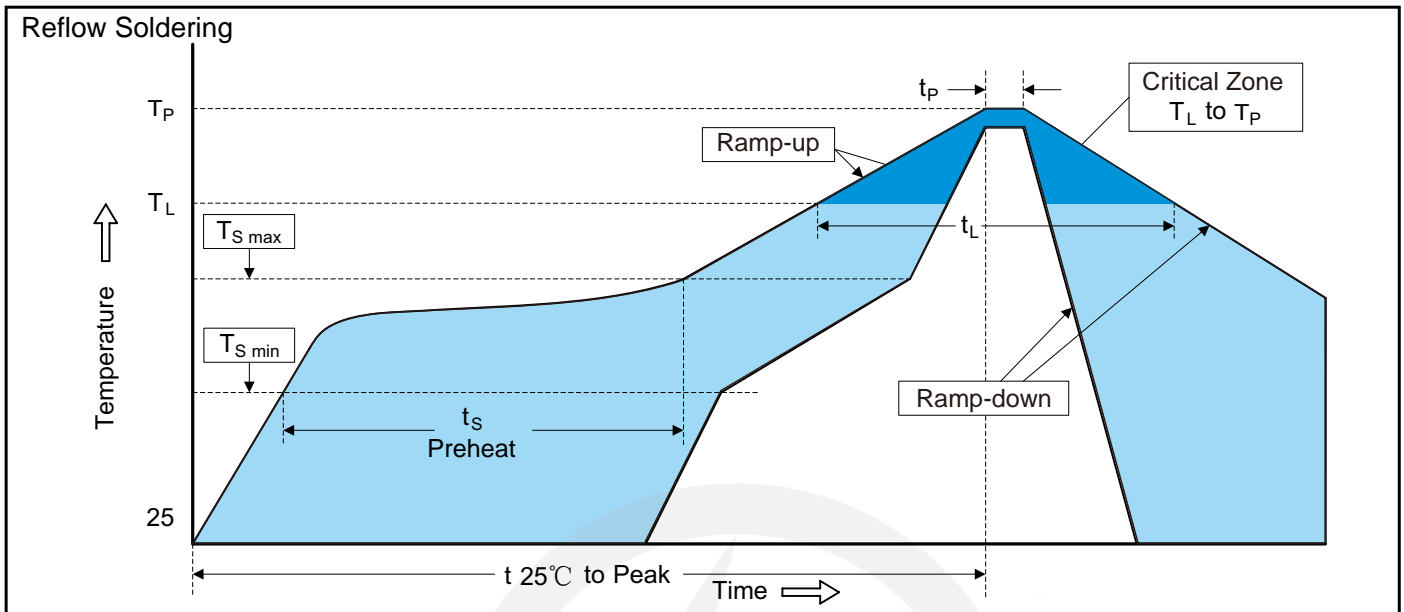


SYMBOL	DIMENSIONS	
	MIN.	MAX.
A	0.800	1.100
A1	0.800	0.900
b	0.250	0.400
C	0.080	0.177
D	2.300	2.800
D1	1.400	1.800
E	1.150	1.400
L1	0.100	0.400
L	0.475 TYP.	
θ	8°	

SOD-323 Suggested Pad Layout



- Note:
1. Controlling dimension: in millimeters.
 2. General tolerance: $\pm 0.05\text{mm}$
 3. The pad layout is for reference purpose only.

Recommended Soldering Conditions

Recommended Conditions

Profile Feature	Pb-Free Assembly
Average ramp-up rate (T_L to T_P)	3°C/second max.
Preheat	
-Temperature Min ($T_{S\ min}$)	150°C
-Temperature Max ($T_{S\ max}$)	200°C
-Time (min to max) (t_s)	60-180 seconds
$T_{S\ max}$ to T_L	
-Ramp-up Rate	3°C/second max.
Time maintained above:	
-Temperature (T_L)	217°C
-Time (t_L)	60-150 seconds
Peak Temperature (T_P)	260°C
Time within 5°C of actual Peak Temperature (t_P)	20-40 seconds
Ramp-down Rate	6°C/second max.
Time 25°C to Peak Temperature	8 minutes max.

7" Reel


D2	$\Phi 178.0 \pm 2.0$
D3	$\Phi 50.0$ Min.
D4	$\Phi 13.0 \pm 0.5$
W1	16.0 ± 2.0

Quantity: 3000PCS